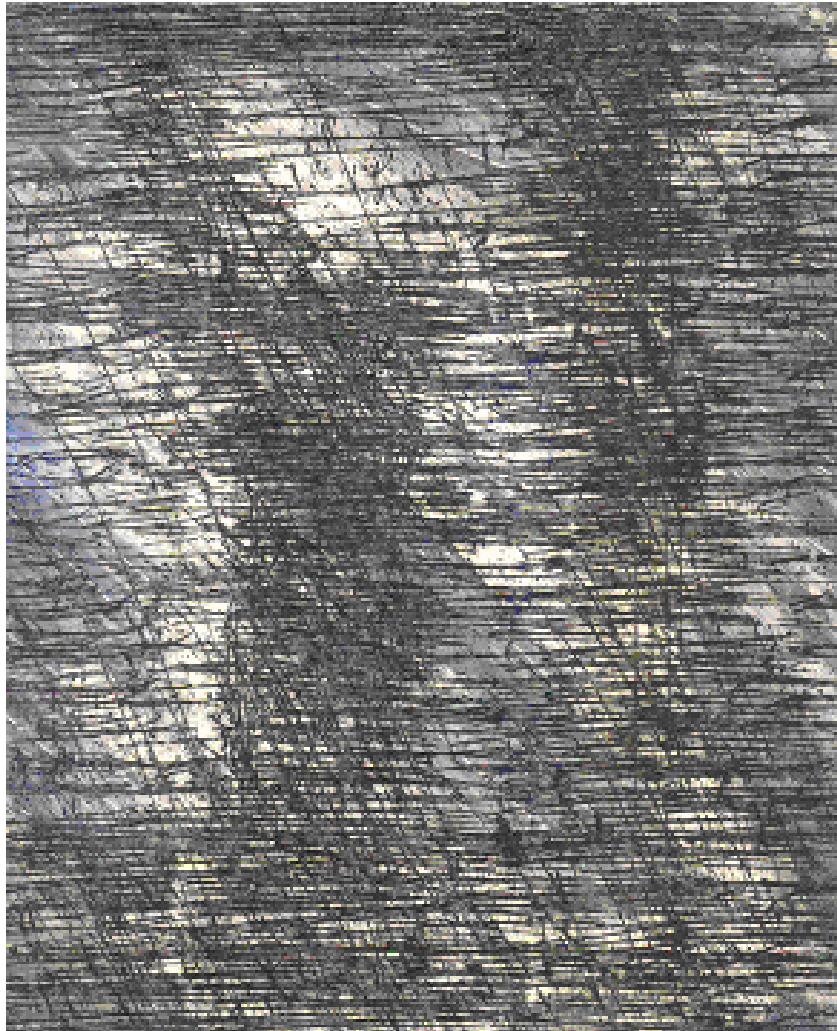


# Moonsilences

Tomáš Pálka





# Moonsilences

Tomáš Pálka

8/2004

durata: cca 10 min.

8 miniatur pro flétnu, klarinet, klavír a housle

## Legenda:

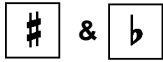
Při provedení jsou hráči rozmístěni porůznu v prostoru, pokud dozvuk v prostoru je alespoň 2 vteřiny. Klarinetista zůstává u klavíru, neboť při hře směřuje korpusem svého nástroje do strun klavíru, **KTERÝ ZŮSTÁVÁ PO CELOU DOBU JEHO HRY, AVŠAK I HRY OSTATNÍCH NÁSTROJŮ NEZATLUMEN** – pedál je stále stisknutý, vyjma míst ve vlastním partu klavíru, kde je pedalizace vypsána! Pokud se v sále vyskytuje i nějaký další klavír, popřípadě více klavírů, je možné všechny využít podobným způsobem – ostatní hráči mohou být též v jejich blízkosti. (Pro odkrytí strun poslouží poskládaný kus papíru zasunutý na způsob klínku v oblasti pedálové mechaniky.)

V případě, že akustika sálu neumožňuje dozvuk alespoň 2 vteřiny, jsou hráči umístěni v co největší blízkosti klavíru, aby při hře mohlo dojít k rezonanci ve strunách. Mohou tak ke korpusu nástroje přistoupit vždy před samotnou hrou, přičemž předchozí hráč uvolňuje své místo...

**Piano:**



break between 1 – 5 sec., on dependence of feeling by interpret



for one note only



hold the string quietly (prolongement)



touch the string inside the piano by the finger of the other hand (to get harmonics)



play pizz. by the fingernail over all three strings (of same pitch) inside the piano

## Violin:



break between 1 – 5 sec., on dependence of feeling by interpret



for one note only



digressing  $\frac{1}{4}$  tone down or up and back

*vb* ~~~~~



play vibrato in that style, how signed



gliss on the string – direction signed



spiccato – sautillé



light lying of fingers on string only (don't press the string to fingerboard)



Bartok's pizzicato

## Woodwinds:



break between 1 – 5 sec., on dependence of feeling by interpret



&



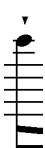
for one note only



frulato (throat)



with pressing of lips only



slap



soft slap



digressing  $\frac{1}{4}$  tone down or up and back



play vibrato in that style, how signed



colour changing (bisbilliando)



1/ Flute

$\bullet = 60$

The musical score for Flute 1 consists of eight staves of music. The first staff begins with a tempo marking of  $\bullet = 60$  and a 7:4 time signature. The music is marked *ppp* and features a series of eighth-note patterns. The second staff continues with 7:4 time signatures and includes dynamic markings of *sf* and *vb* (vibrato). The third staff introduces a 5:4 time signature and a *fp* dynamic marking, with a *gliss.* (glissando) instruction. The fourth staff returns to 7:4 time and includes *sf* and *ppp sub.* markings. The fifth staff features a 7:4 time signature, *gliss.*, *ppp sub.*, *mf*, and *ppp* markings, along with a 9:8 time signature. The sixth staff includes 5:8, 7:4, and *ppp* time signatures and dynamic markings. The seventh staff concludes with a *mf* dynamic marking and an *attacca* instruction.



2/ Piano

$\bullet = 60$

*pp* 7:4 7:4 7:4

*8<sup>va</sup>*

Prolongement

7:4 7:8 5

*ff* *15<sup>ma</sup>*

*pp* *p* *8<sup>va</sup>*

Red.

*8<sup>va</sup>* *8<sup>va</sup>*

5:4 5:4 5:4 5:4 7:4 6:4

Red. Red. Red. Red. Red. Red.

move finger on the string  
(to get lower harmonics)

7:12

*mf* *p*

Red. Red. lasciar suonare

attacca

# 3/ Clarinet

♩ = 60

Musical staff with a treble clef and a key signature of two flats. The staff contains a sequence of eighth notes with a slur above them. Above the staff, the fingering numbers 1, 2, 3 are repeated for each group of three notes. Below the staff, the dynamic marking *pp* is present, followed by a series of 3:2 time signature changes.

Musical staff with a treble clef and a key signature of two flats. It begins with a *ppp* dynamic marking. The first measure has a 7:4 time signature. A slur covers several measures, with a *mf* dynamic marking and a *sub. p* instruction below it. A 3:2 time signature change occurs. The staff ends with a 3:2 time signature and a 1 2 3 fingering instruction.

Musical staff with a treble clef and a key signature of two flats. It starts with a 3:2 time signature and a slur. A *p* dynamic marking is placed below the staff. The staff concludes with a 7:4 time signature.

Musical staff with a treble clef and a key signature of two flats. It begins with a 7:4 time signature and a slur. A *p* dynamic marking is shown. The staff ends with a 3:2 time signature and a *pp* dynamic marking. A *throat frulato* instruction is present above the staff.

Musical staff with a treble clef and a key signature of two flats. It starts with a 7:4 time signature and a slur. A *p* dynamic marking is shown. The staff ends with a 3:2 time signature and a double bar line. Below the staff, the word *attacca* is written.

# 4/ Violin

♩ = 60  
sul G

pp  
gliss.  
5:4  
vb  
gliss.

pp  
gliss.  
gliss.  
gliss.  
vb

sul tasto  
pp  
9:8  
sul G  
ord. vb  
gliss.

gliss.  
gliss.  
7:4  
7:4  
vb  
gliss.

gliss.  
sul tasto  
7:4  
sul ponticello  
vb  
mf

ord.  
espressivo, vb molto  
pp  
f

sul D  
pp  
gliss.  
mf  
sul G  
gliss.  
ppp  
attacca

# 5/ Piano

♩ = 60 pizz. (sempre)

*8va* (sempre al Fine)

*mf* sempre

3:2 3:2 3:2

3:2 3:2 3:2

Red. lasciar suonare (sempre)

3:2 3:2 3:2

*8va*

*pp* sempre

3:2 3:2 3:2

3:2 3:2 3:2

3:2 3:2 3:2

3:2 3:2 3:2

3:2 3:2 3:2

3:2 3:2 3:2

15<sup>ma</sup>-----

3:2 3:2 3:2

This system shows the first two staves of a musical score. The upper staff contains a complex rhythmic pattern with multiple 3:2 time signature markings. The lower staff has a single note with a fermata and a 15<sup>ma</sup> (15th measure) marking.

3:2 3:2 3:2 3:2

This system continues the musical notation with four 3:2 time signature markings in the upper staff and a single note with a fermata in the lower staff.

3:2 3:2 3:2 3:2

8<sup>va</sup>-----

This system features four 3:2 time signature markings in the upper staff and a single note with a fermata in the lower staff, marked with an 8<sup>va</sup> (8th measure).

3:2 3:2 3:2 3:2

15<sup>ma</sup>-----

This system contains four 3:2 time signature markings in the upper staff and a single note with a fermata in the lower staff, marked with a 15<sup>ma</sup> (15th measure).

3:2 3:2 3:2 3:2

This system shows the final two staves of the musical score, with four 3:2 time signature markings in the upper staff and a single note with a fermata in the lower staff.

(*Leg.*)----- (lasciar suonare)  
attacca

6/ Flute

$\bullet = 60$

7:4 7:4 7:4 7:4

*ppp*

7:4 7:4 7:4

*sf sf sf*

*vb*

5:4

*fp*

7:4

*ppp sub.* *sf* *pp sub.* 15:8

*gliss.*

*mf* 7:12 *ppp* 5:8 7:4

*pp pp*

attacca

# 7/ Violin

♩ = 60

*gva*

*vb* *vb* *sf* *vb* *sub. pp* 9:8

*pp* 5:4 3:2 *sub. pp* *poco flautato* *ord.* *pizz.* *mf*

*arco* 7:4 *vb* *pp* *attacca*

# 8/ Clarinet

♩ = 60  
(legato)

The musical score for Clarinet 8 consists of four staves of music. The first staff begins with a dynamic marking of *ppp* and a tempo marking of ♩ = 60 (legato). A dashed line indicates a melodic line across the first two staves. The second staff features a complex rhythmic pattern with many beamed notes and a large slur. The third staff continues the melodic and rhythmic development. The fourth staff concludes with a dynamic marking of *ppp*, a fermata, and the instruction *attacca* with a slash and a fermata symbol.